

LAND USE / STATISTICS			
STAGE 21		WAPC Ref:- 137078	
PARCEL TYPE	MAP SYMBOL	NUMBER OF PARCELS	AREA (ha)
Traditional Lots		14	0.7587
Duplex Lots	Dx	1	0.0700
Public Open Space	P.O.S.	2	0.1559
Misc. Land Use Lots	§	1	2.0000
Road Widening	ROAD WIDENING	2	0.0057
Roads (inc. truncations)			0.3724
STAGE TOTAL			3.3627

WAPC Conditions to be noted on DP
 9. 165 Notification - Proximity to Mosquito breeding area

NOTES
 1. ABUTTAL LOTS AS SUPPLIED BY 'TABEC'

Rev.	Description	Drawn	Date	Checked
H	Amend lots 2008 & 8001 to make lot 2008 "700m²"	SCL	4/01/2010	TDK
G	Redesign lot configuration. Lot yield reduced by one	TDK	14/09/2009	TAV
F	Added approved road name Calder Nook	GDC	23/06/2009	TAV
E	Amend stage 21 design	TDK	8/6/2009	TAV
D	Add padmount site and shift stage 21 south to keep site at 2ha	TDK	10/3/2009	TAV
C	Re calculate entire site to increase area of lot 2019 and add adjusted surround.	TAV	17/2/2009	TAV
B	Add road widening to lot 2019 for Telstra cab locations	SCL	16/12/2008	TJM
A	Initial Issue	SCL	16/12/2008	TJM

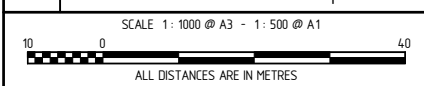
The contents of this plan are current and correct as of the date stated within the revision panel. All consultants and persons wishing to utilise this data should satisfy themselves of this plan's currency by contacting McMullen Nolan and Partners Surveyors.

↑
NORTH

FILES mapCOGO - Precal21
 Station - 95610pr-003h

STAGE 21
 BADGERUP AVENUE, LAKELANDS
 A Peet Mandurah Project

Scale	1: 1000 @ A3	Date	16/12/2008
Datum	Truncated PCG	Job No.	95610
Drawn	Steven Light	Drawing	95610-003
Project Mgr	Scott Anderson	Revision	H



PLANNER'S DESIGN SOURCE for Rev E
 Planner - Taylor Burrell Barnett
 Received date - 05/06/2009
 File name - 93_079_157 Stage 21P Revised Plan of
 Subdivision 0596091.dwg

ENGINEER'S DESIGN SOURCE for Rev D
 Engineer - WGE
 Received date - 19/03/2009
 Data purpose - padmount site

All areas and dimensions depicted on this plan are subject to survey and Landgate registration

Level 1
 2 Sabra Crescent
 Jandakot
 W.A. 6964
 Australia

PO Box 3526
 Success
 W.A. 6964
 Australia

Tel: (08) 6436 1599
 Fax: (08) 6436 1500
 maps@mapsurvey.com.au
 www.mapsurvey.com.au

McMullen Nolan and Partners Surveyors Pty Ltd
 ABN 90 009 363 311

