

TYPE	FREEHOLD
PURPOSE	SUBDIVISION
PLAN OF	LOTS 63 - 69 (inc.) 71 - 90 (inc.), 92 - 98 (inc.) 102 - 110 (inc.), 113 - 120 (inc.) 200 - 204 (inc.), 207 - 221 (inc.) 223 - 226 (inc.), 231 - 240 (inc.) 242 - 247 (inc.), 4952 - 4954 (inc.) 9003, ROADS, EASEMENTS & RESTRICTIVE COVENANT

DISTRICT	COCKBURN SOUND	SSA	YES
FILE	LOCALITY LAKELANDS	FORMER TENURE	LOT 9002 DP 36716 C/T 2556/725
LOCAL AUTHORITY	CITY OF MANDURAH	FIELD BOOK	83169 91191 83170 91192
INDEX	ON BG33 (1) 2.2 BG33 (2) 07.06 BG33 (2) 07.07		
SCALE	1:10000		

SURVEYOR'S CERTIFICATE - Reg 54
I, M.C. BROWN hereby certify that this plan of survey is a correct representation of the survey and/or calculations from measurements recorded in the field book, judged for the purposes of this plan and that it complies with the relevant written legislation to which it is lodged.
Licensed Surveyor
M.C. BROWN
D.M.S. 48803

SURVEY FIRM	BROWN McALISTER (WA) Pty Ltd 43 Brookway, Midland, Western Australia, 6449 Telephone (08) 9386 9488 Facsimile (08) 9386 9477
APPROVED BY	WESTERN AUSTRALIAN PLANNING COMMISSION 115172 119818 FILE 120425
LOGGED	DATE 4.9.2003 LEGAL COMPONENT BLG FEE PAID DODGET 393.00 CERTIFIED PLANNING 30.03.03 CORRECT 4.83.0 ASSESS No. 393599 L.S.O. 498-2003 DATE 22/11/2004

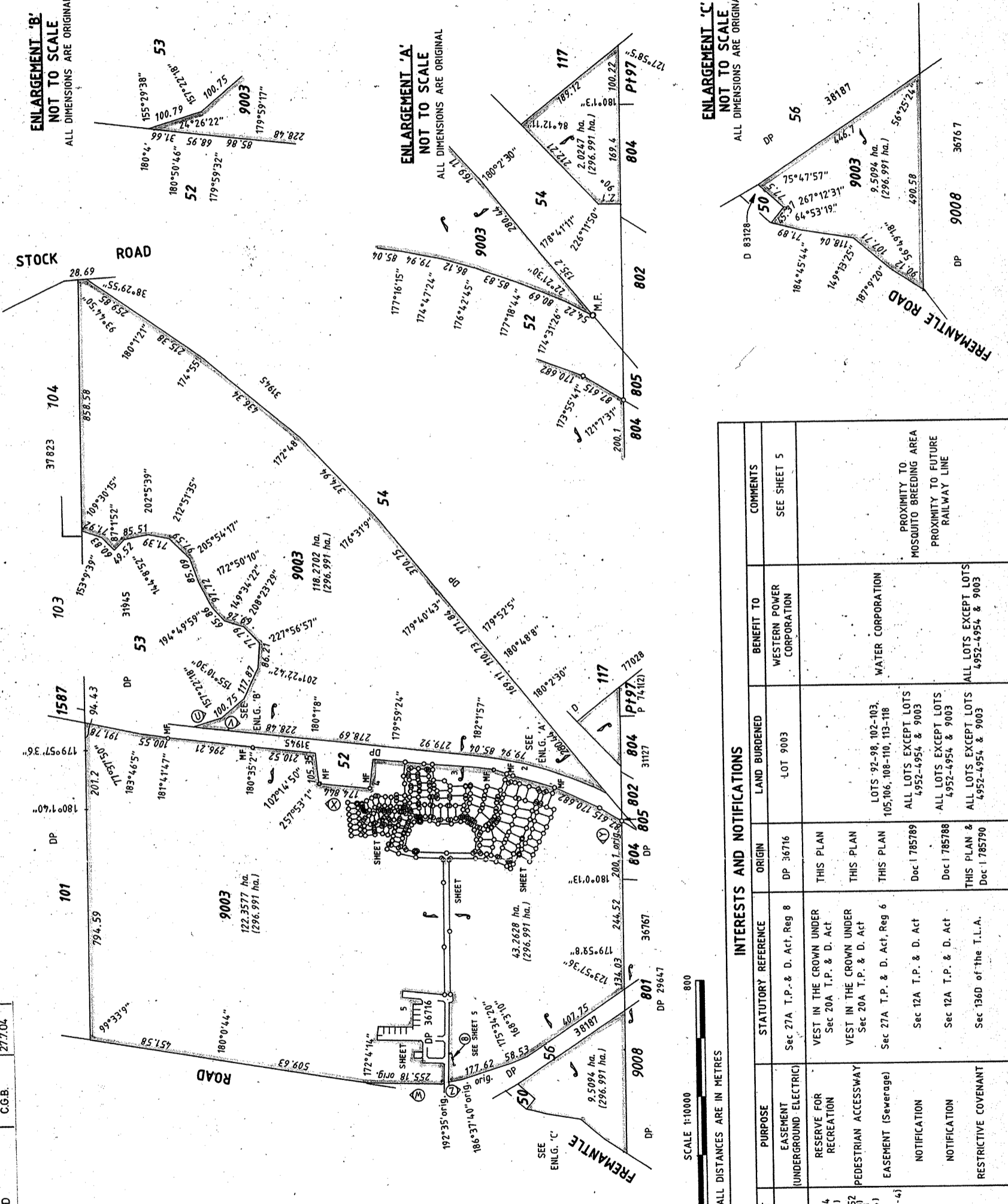
IN ORDER FOR DEALINGS
SUBJECT TO DEALING ON DP 36716 & 36717, SEC. 295(S) OF LOCAL GOVT ACT, SEC. 20A, 27A & 12A OF T.P. & D. ACT AND SEC. 136 D OF T.L.A.
BY B. BRIDGES, 23.1.2004
INSPECTOR OF PLANS & SURVEYS / AUTHORIZED LAND OFFICER

APPROVED - Reg 26A(4)
10-2-04
INSPECTOR OF PLANS & SURVEYS / AUTHORIZED LAND OFFICER
DEPARTMENT OF LAND INFORMATION

DEPOSITED PLAN	38186
SHEET	1 OF 7 SHEETS
EDITION	1 OF 1 VERSION

SPECIAL SURVEY AREA SUBDIVISION

ALL DIMENSIONS CLOCKWISE BETWEEN "U" TO "V", "W" TO "X" AND "Y" TO "Z" ARE ORIGINAL
SURVEY CARRIED OUT UNDER REGULATION 26A SPECIAL SURVEY AREA GUIDELINES



ENLARGEMENT 'B'
NOT TO SCALE
ALL DIMENSIONS ARE ORIGINAL

ENLARGEMENT 'A'
NOT TO SCALE
ALL DIMENSIONS ARE ORIGINAL

ENLARGEMENT 'C'
NOT TO SCALE
ALL DIMENSIONS ARE ORIGINAL

INTERESTS AND NOTIFICATIONS

SUBJECT	PURPOSE	STATUTORY REFERENCE	ORIGIN	LAND BURDENED	BENEFIT TO	COMMENTS
⑥	EASEMENT (UNDERGROUND-ELECTRIC)	Sec 27A T.P. & D. Act, Reg 8	DP 36716	LOT 9003	WESTERN POWER CORPORATION	SEE SHEET 5
LOT 4954 (SHEET 3)	RESERVE FOR RECREATION	VEST IN THE CROWN UNDER Sec 20A T.P. & D. Act	THIS PLAN			
LOTS 4952 (SHEET 3) & 4953 (SHEET 4)	PEDESTRIAN ACCESSWAY	VEST IN THE CROWN UNDER Sec 20A T.P. & D. Act	THIS PLAN			
④ (SHEETS 2-4)	EASEMENT (Sewerage)	Sec 27A T.P. & D. Act, Reg 6	THIS PLAN	LOTS 92-98, 102-103, 105, 106, 108-110, 113-118	WATER CORPORATION	
	NOTIFICATION	Sec 12A T.P. & D. Act	Doc I 785789	ALL LOTS EXCEPT LOTS 4952-4954 & 9003		PROXIMITY TO MOSQUITO BREEDING AREA PROXIMITY TO FUTURE RAILWAY LINE
	NOTIFICATION	Sec 12A T.P. & D. Act	Doc I 785788	ALL LOTS EXCEPT LOTS 4952-4954 & 9003		
	RESTRICTIVE COVENANT	Sec 136D of the T.L.A.	THIS PLAN & Doc I 785790	ALL LOTS EXCEPT LOTS 4952-4954 & 9003		ALL LOTS EXCEPT LOTS 4952-4954 & 9003

DP 38186 (01)

DP 38186 (06)



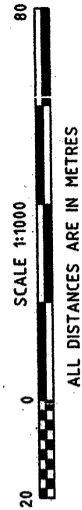
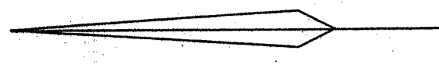
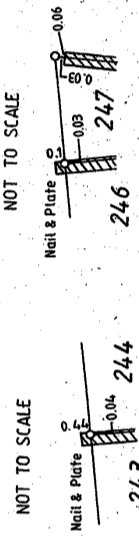
A2 ORIGINAL

SURVEY CARRIED OUT UNDER REGULATION 26A
SPECIAL SURVEY AREA GUIDELINES

ALL BEARINGS AND DISTANCES ON THIS SHEET
ARE THE RESULTS OF LEAST SQUARE ADJUSTMENTS
CARRIED OUT ON RAW FIELD OBSERVATIONS
GRID DATUM - P.C.G. '84

SURVEY INFORMATION ONLY
SURVEY SHEET
SEE SHEET 7 FOR LEGEND

FOR HEADING SEE SHEET 1



Central
Surveying
P.O. Box 100
Perth WA 6000

Department of
Land Information
WESTERN
AUSTRALIA

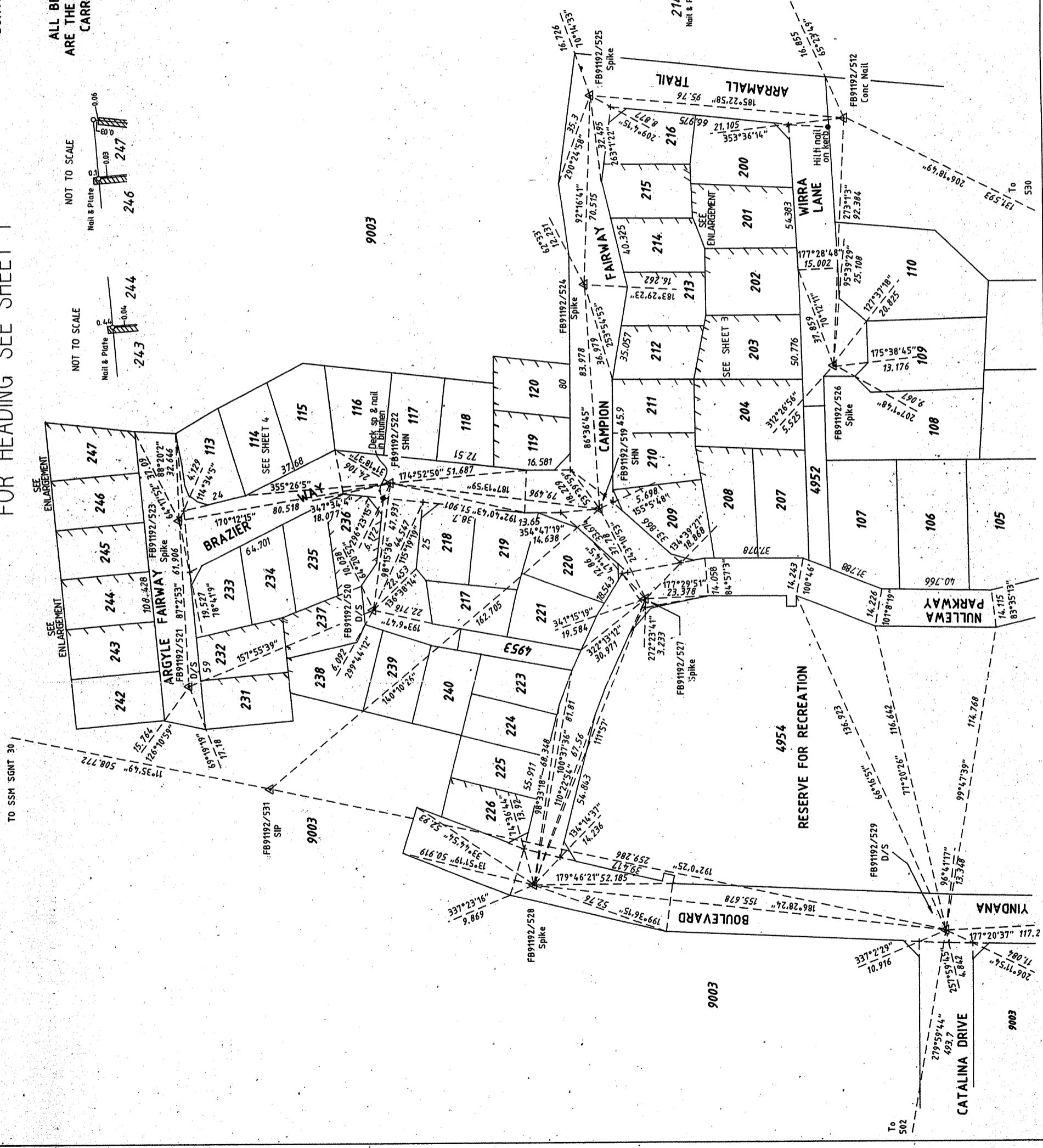
APPROVED BY
WESTERN AUSTRALIAN
PLANNING COMMISSION

FILE
DATE

SCALE 1:1000
ALL DISTANCES ARE IN METRES

DEPOSITED PLAN
38186

SHEET 6 OF 7 SHEETS
EDITION 1 VERSION 6



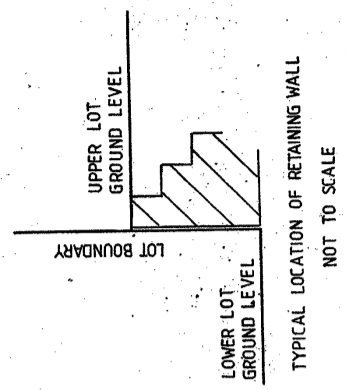
DP 38186 (07)



SURVEY CARRIED OUT UNDER REGULATION 26A
SPECIAL SURVEY AREA GUIDELINES

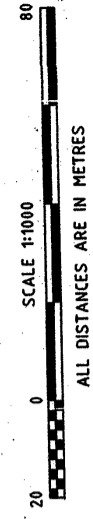
ALL BEARINGS AND DISTANCES ON THIS SHEET
ARE THE RESULTS OF LEAST SQUARE ADJUSTMENTS
CARRIED OUT ON RAW FIELD OBSERVATIONS
GRID DATUM - P.C.G. '84

SURVEY INFORMATION ONLY
SURVEY SHEET



LEGEND

- ▲ DENOTES STANDARD SURVEY MARK (SSM)
- ◻ DENOTES PERMANENT CONTROL MARK (PCM)
- ◻ DENOTES TEMPORARY CONTROL MARK (TCM)
- + DENOTES SPIKE
- DENOTES RETAINING WALL



© Geospatial
Catalogue
No. 1000
P. 000 000 000 000

Department of
Land Information

DEPOSITED PLAN
38186

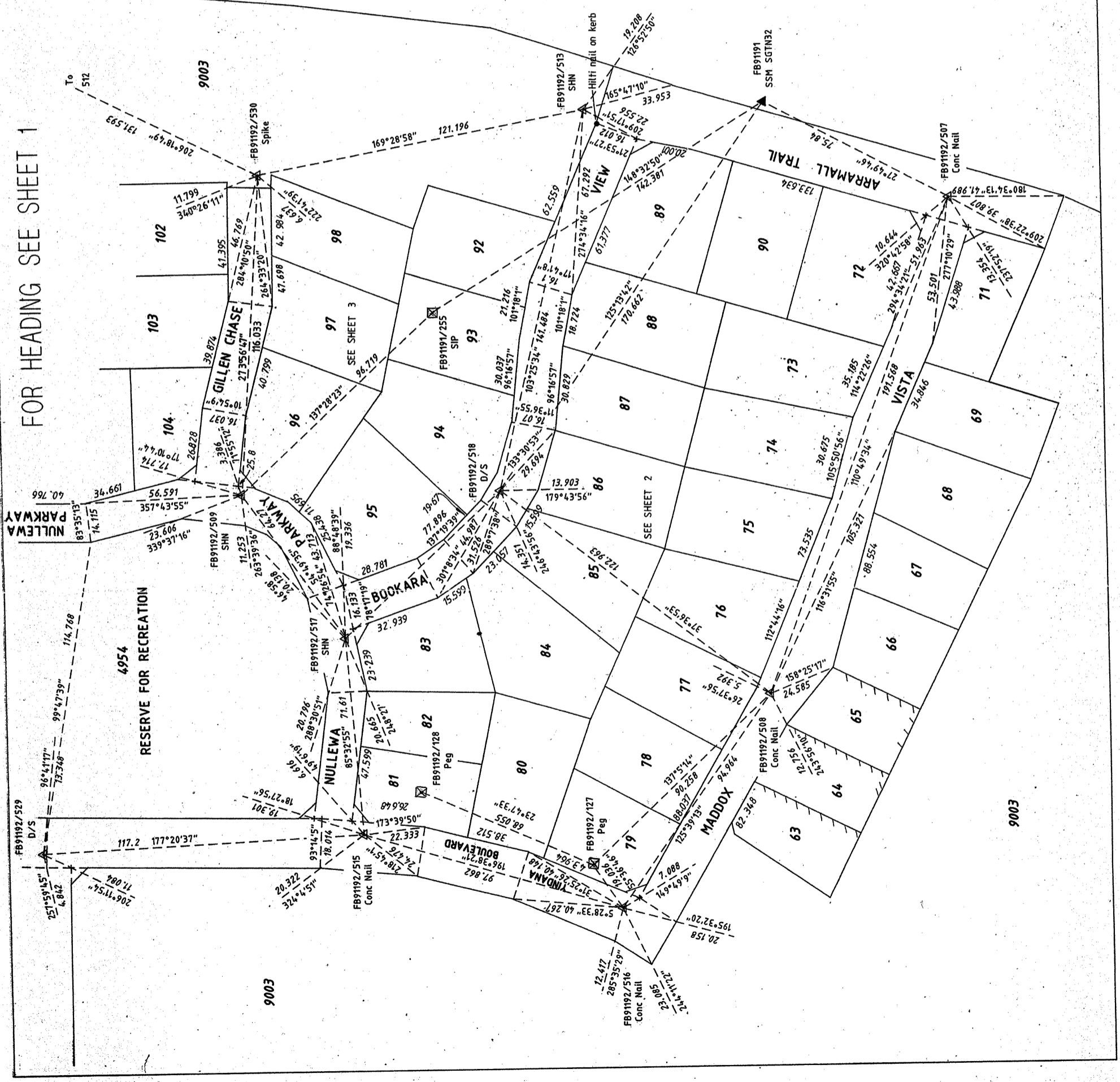
SCALE 1:1000
ALL DISTANCES ARE IN METRES

APPROVED BY
WESTERN AUSTRALIAN
PLANNING COMMISSION

FILE
DATE
DRAWN BY
CHECKED BY

SHEET 7 OF 7 SHEETS
EDITION 1 VERSION 6

FOR HEADING SEE SHEET 1



P38186

<u>Lot Number</u>	<u>Part Register Number</u>	<u>Section Sheet Number</u>	<u>Lot Number</u>	<u>Part Register Number</u>	<u>Section Sheet Number</u>
63	2557/201	2	64	2557/202	2
65	2557/203	2	66	2557/204	2
67	2557/205	2	68	2557/206	2
69	2557/207	2	71	2557/208	2
72	2557/209	2	73	2557/210	2
74	2557/211	2	75	2557/212	2
76	2557/213	2	77	2557/214	2
78	2557/215	2	79	2557/216	2
80	2557/217	2	81	2557/218	2
82	2557/219	2	83	2557/220	2
84	2557/221	2	85	2557/222	2
86	2557/223	2	87	2557/224	2
88	2557/225	2	89	2557/226	2
90	2557/227	2	92	2557/228	2
93	2557/229	2	94	2557/230	2
95	2557/231	2			

P38186

<u>Lot Number</u>	<u>Part Register Number</u>	<u>Section Sheet Number</u>	<u>Lot Number</u>	<u>Part Register Number</u>	<u>Section Sheet Number</u>
96	2557/232	3	97	2557/233	3
98	2557/234	3	102	2557/235	3
103	2557/236	3	104	2557/237	3
105	2557/238	3	106	2557/239	3
107	2557/240	3	108	2557/241	3
109	2557/242	3	110	2557/243	3
200	2557/252	3	201	2557/253	3
202	2557/254	3	203	2557/255	3
204	2557/256	3	207	2557/257	3
208	2557/258	3	209	2557/259	3
210	2557/260	3	211	2557/261	3
212	2557/262	3	213	2557/263	3
214	2557/264	3	215	2557/265	3
216	2557/266	3	4952	2557/292	3
4954	LR 3137/309	3			

P38186

<u>Lot Number</u>	<u>Part Register Number</u>	<u>Section Sheet Number</u>	<u>Lot Number</u>	<u>Part Register Number</u>	<u>Section Sheet Number</u>
113	2557/244	4	114	2557/245	4
115	2557/246	4	116	2557/247	4
117	2557/248	4	118	2557/249	4
119	2557/250	4	120	2557/251	4
217	2557/267	4	218	2557/268	4
219	2557/269	4	220	2557/270	4
221	2557/271	4	223	2557/272	4
224	2557/273	4	225	2557/274	4
226	2557/275	4	231	2557/276	4
232	2557/277	4	233	2557/278	4
234	2557/279	4	235	2557/280	4
236	2557/281	4	237	2557/282	4
238	2557/283	4	239	2557/284	4
240	2557/285	4	242	2557/286	4
243	2557/287	4	244	2557/288	4
245	2557/289	4	246	2557/290	4
247	2557/291	4	4953	2557/293	4

TYPE	FREEHOLD
PURPOSE	SUBDIVISION
PLAN OF	LOTS 63 - 69 (inc.) 71 - 90 (inc.), 92 - 98 (inc.) 102 - 110 (inc.), 113 - 120 (inc.) 200 - 204 (inc.), 207 - 221 (inc.) 223 - 226 (inc.), 231 - 240 (inc.) 242 - 247 (inc.), 4952 - 4954 (inc.) 9003, ROADS, EASEMENTS & RESTRICTIVE COVENANT

DISTRICT	COCKBURN SOUND	SSA	YES
FILE	LOCALITY LAKELANDS	FORMER TENURE	LOT 9002 DP 36716 C/T 2556/725
LOCAL AUTHORITY	CITY OF MANDURAH	FIELD BOOK	83169 91191 83170 91192
INDEX	ON BG33 (1) 2.2 BG33 (2) 07.06 BG33 (2) 07.07		

SCALE 1:10000
ALL DISTANCES ARE IN METRES

SURVEYOR'S CERTIFICATE - Reg 54
I, M.C. BROWN hereby certify that this plan of survey is a correct representation of the survey and/or calculations from measurements recorded in the field book, lodged for the purposes of this plan and that it complies with the relevant written legislation to which it is lodged.

Licensed Surveyor
M.C. BROWN
D.M.S. 498.03

SURVEY FIRM	BROWN McALISTER (WA) Pty Ltd 43 Brookway, Melburn, Westpac Australia, 6007 Telephone (08) 9386 9488 Facsimile (08) 9386 9477
APPROVED BY	WESTERN AUSTRALIAN PLANNING COMMISSION 115172 119818 FILE 120425
LOGGED DATE	4.4.2003
LEGAL COMPONENT	BLG
DOCKET PLAN/REGAM	393.00
CERTIFIED CORRECT	DATE 11.11.2004
ASSESS NO.	4839
ISSUE	498.2003
F.S.C.	393599

IN ORDER FOR DEALINGS

SUBJECT TO DEALING ON DP 36716 & 36717, SEC. 295(S) OF LOCAL GOVT ACT, SEC. 20A, 27A & 12A OF T.P. & D. ACT AND SEC. 136 D OF T.L.A. BY BRITISH. 23.1.2004

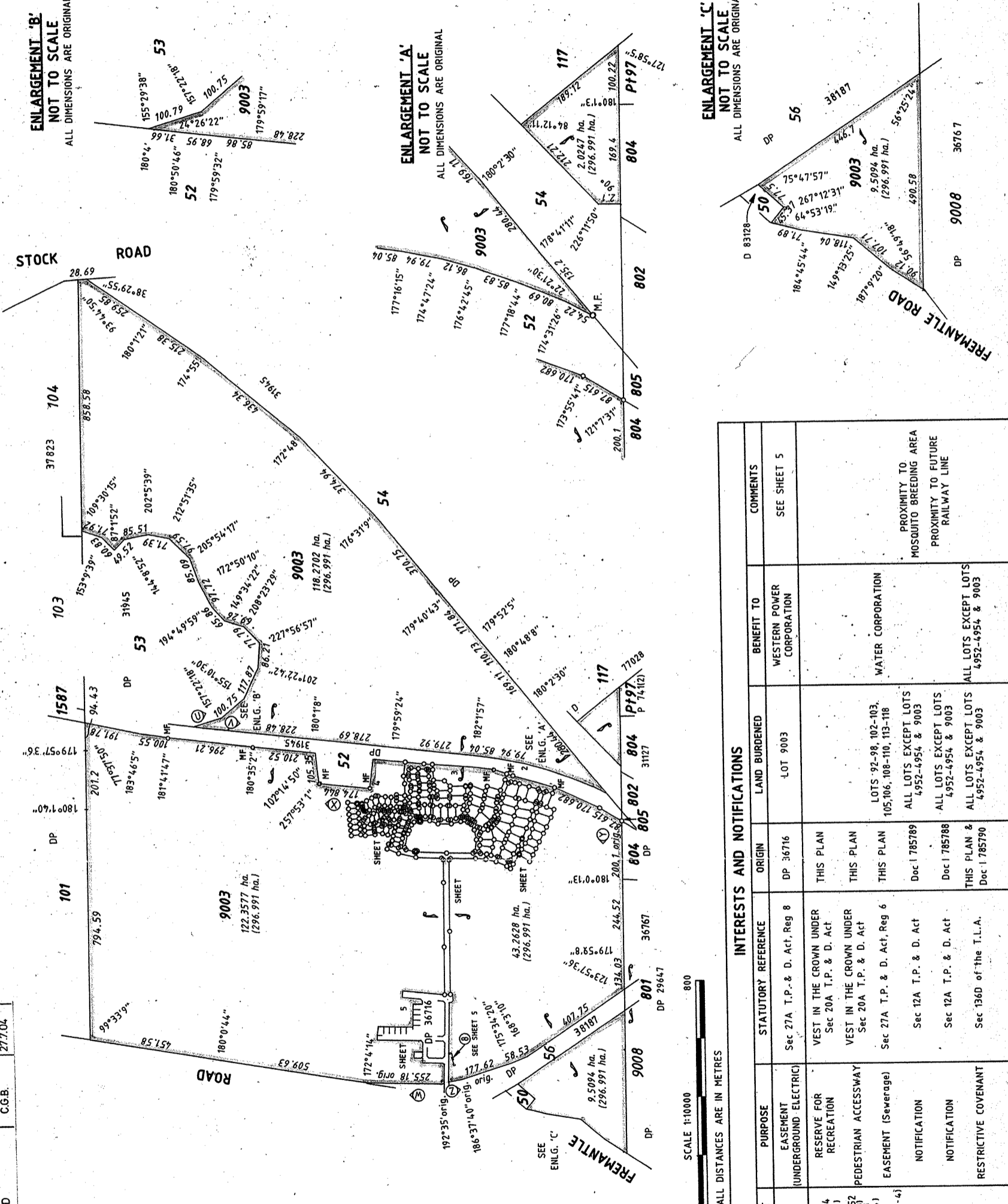
INSPECTOR OF PLANS & SURVEYS / AUTHORIZED LAND OFFICER

APPROVED - Reg 26A(4)
10.2.04
INSPECTOR OF PLANS & SURVEYS / AUTHORIZED LAND OFFICER

DEPOSITED PLAN
38186
SHEET 1 OF 7 SHEETS
EDITION 1 VERSION 6

SPECIAL SURVEY AREA SUBDIVISION

ALL DIMENSIONS CLOCKWISE BETWEEN "U" TO "V", "W" TO "X" AND "Y" TO "Z" ARE ORIGINAL
SURVEY CARRIED OUT UNDER REGULATION 26A SPECIAL SURVEY AREA GUIDELINES



ENLARGEMENT 'B' NOT TO SCALE
ALL DIMENSIONS ARE ORIGINAL

ENLARGEMENT 'A' NOT TO SCALE
ALL DIMENSIONS ARE ORIGINAL

ENLARGEMENT 'C' NOT TO SCALE
ALL DIMENSIONS ARE ORIGINAL

INTERESTS AND NOTIFICATIONS

SUBJECT	PURPOSE	STATUTORY REFERENCE	ORIGIN	LAND BURDENED	BENEFIT TO	COMMENTS
⑥	EASEMENT (UNDERGROUND-ELECTRIC)	Sec 27A T.P. & D. Act, Reg 8	DP 36716	LOT 9003	WESTERN POWER CORPORATION	SEE SHEET 5
LOT 4954 (SHEET 3)	RESERVE FOR RECREATION	VEST IN THE CROWN UNDER Sec 20A T.P. & D. Act	THIS PLAN			
LOTS 4952 (SHEET 3) & 4953 (SHEET 4)	PEDESTRIAN ACCESSWAY	VEST IN THE CROWN UNDER Sec 20A T.P. & D. Act	THIS PLAN			
④ (SHEETS 2-4)	EASEMENT (Sewerage)	Sec 27A T.P. & D. Act, Reg 6	THIS PLAN	LOTS 92-98, 102-103, 105, 106, 108-110, 113-118	WATER CORPORATION	
	NOTIFICATION	Sec 12A T.P. & D. Act	Doc I 785789	ALL LOTS EXCEPT LOTS 4952-4954 & 9003		PROXIMITY TO MOSQUITO BREEDING AREA
	NOTIFICATION	Sec 12A T.P. & D. Act	Doc I 785788	ALL LOTS EXCEPT LOTS 4952-4954 & 9003		PROXIMITY TO FUTURE RAILWAY LINE
	RESTRICTIVE COVENANT	Sec 136D of the T.L.A.	THIS PLAN & Doc I 785790	ALL LOTS EXCEPT LOTS 4952-4954 & 9003		ALL LOTS EXCEPT LOTS 4952-4954 & 9003

ED/VER	AMENDMENT	BY	DATE
1/2	ADD PADMOUNT SITES LOT 4954	CCPL	10.11.03
1/3	AMEND COMMON BOUNDARY LOTS 52 & 9003 (SHEET 4)	CCPL	12.12.03
1/4	NUMEROUS CORRECTIONS DUE TO REQUISITION	CCPL	29.12.03
1/5	SURVEY SHEETS ALSO SHOWING NON STANDARD PARKING BEING SHEETS 6 & 7 NOW LODGED.	BH(WA)	30-12-03
1/6	CORRECT PCN TIES SHEET 7 AMENDMENT APPROVED	CCPL C.G.B.	23.7.04 27.7.04

DP 38186 (01)

DP 38186 (02)



Cadastral Cartographics
 PO Box 186, Perth WA 6001
 Ph 08 938 0885 Fax 08 938 1895

SCALE 1:1750
 ALL DISTANCES ARE IN METRES

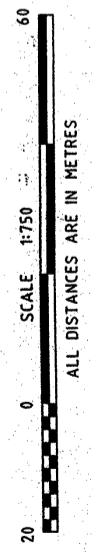
APPROVED BY
 WESTERN AUSTRALIAN
 PLANNING COMMISSION
 FILE 115172, 119818, 120425
 DATE 28/11/2004

DEPOSITED PLAN
38186

SHEET 2 OF 7 SHEETS
 EDITION 1 VERSION 6



9003
43.2628 ha.
(296.991 ha.)



CC-30002

SEE SHEET 1

DP 38186 (06)



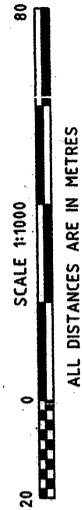
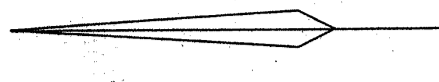
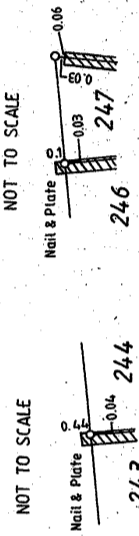
A2 ORIGINAL

SURVEY CARRIED OUT UNDER REGULATION 26A
SPECIAL SURVEY AREA GUIDELINES

ALL BEARINGS AND DISTANCES ON THIS SHEET
ARE THE RESULTS OF LEAST SQUARE ADJUSTMENTS
CARRIED OUT ON RAW FIELD OBSERVATIONS
GRID DATUM - P.C.G. '84

SURVEY INFORMATION ONLY
SURVEY SHEET
SEE SHEET 7 FOR LEGEND

FOR HEADING SEE SHEET 1



Central
Surveying
Engineers
No. 1000
100 Stirling Street
Perth WA 6000

Department of
Land Information
WESTERN
AUSTRALIA

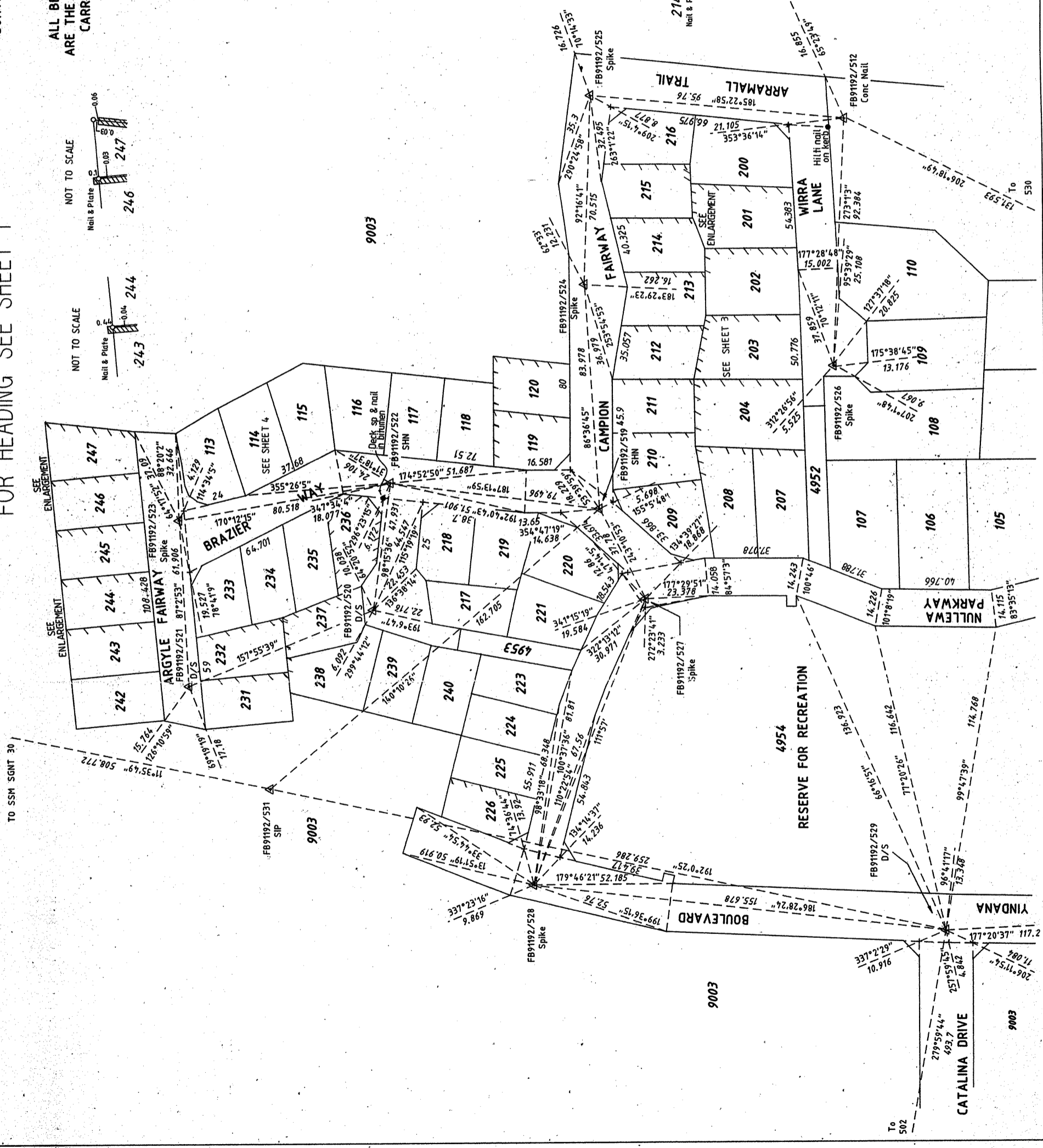
APPROVED BY
WESTERN AUSTRALIAN
PLANNING COMMISSION

FILE
DATE
ISSUED UNDER S.A. REGULATION 26A

SCALE 1:1000
ALL DISTANCES ARE IN METRES

DEPOSITED PLAN
38186

SHEET 6 OF 7 SHEETS
EDITION 1 VERSION 6



P38186

<u>Lot Number</u>	<u>Part Register Number</u>	<u>Section Sheet Number</u>	<u>Lot Number</u>	<u>Part Register Number</u>	<u>Section Sheet Number</u>
63	2557/201	1	64	2557/202	1
65	2557/203	1	66	2557/204	1
67	2557/205	1	68	2557/206	1
69	2557/207	1	71	2557/208	1
72	2557/209	1	73	2557/210	1
74	2557/211	1	75	2557/212	1
76	2557/213	1	77	2557/214	1
78	2557/215	1	79	2557/216	1
80	2557/217	1	81	2557/218	1
82	2557/219	1	83	2557/220	1
84	2557/221	1	85	2557/222	1
86	2557/223	1	87	2557/224	1
88	2557/225	1	89	2557/226	1
90	2557/227	1	92	2557/228	1
93	2557/229	1	94	2557/230	1
95	2557/231	1	96	2557/232	1
97	2557/233	1	98	2557/234	1
102	2557/235	1	103	2557/236	1
104	2557/237	1	105	2557/238	1
106	2557/239	1	107	2557/240	1
108	2557/241	1	109	2557/242	1
110	2557/243	1	113	2557/244	1
114	2557/245	1	115	2557/246	1
116	2557/247	1	117	2557/248	1
118	2557/249	1	119	2557/250	1
120	2557/251	1	200	2557/252	1
201	2557/253	1	202	2557/254	1
203	2557/255	1	204	2557/256	1
207	2557/257	1	208	2557/258	1
209	2557/259	1	210	2557/260	1
211	2557/261	1	212	2557/262	1
213	2557/263	1	214	2557/264	1
215	2557/265	1	216	2557/266	1
217	2557/267	1	218	2557/268	1
219	2557/269	1	220	2557/270	1
221	2557/271	1	223	2557/272	1
224	2557/273	1	225	2557/274	1
226	2557/275	1	231	2557/276	1
232	2557/277	1	233	2557/278	1
234	2557/279	1	235	2557/280	1
236	2557/281	1	237	2557/282	1
238	2557/283	1	239	2557/284	1
240	2557/285	1	242	2557/286	1
243	2557/287	1	244	2557/288	1
245	2557/289	1	246	2557/290	1
247	2557/291	1	4952	2557/292	1
4953	2557/293	1	4954	LR 3137/309	1

P38186

<u>Lot Number</u>	<u>Part Register Number</u>	<u>Section Sheet Number</u>	<u>Lot Number</u>	<u>Part Register Number</u>	<u>Section Sheet Number</u>
63	2557/201	1	64	2557/202	1
65	2557/203	1	66	2557/204	1
67	2557/205	1	68	2557/206	1
69	2557/207	1	71	2557/208	1
72	2557/209	1	73	2557/210	1
74	2557/211	1	75	2557/212	1
76	2557/213	1	77	2557/214	1
78	2557/215	1	79	2557/216	1
80	2557/217	1	81	2557/218	1
82	2557/219	1	83	2557/220	1
84	2557/221	1	85	2557/222	1
86	2557/223	1	87	2557/224	1
88	2557/225	1	89	2557/226	1
90	2557/227	1	92	2557/228	1
93	2557/229	1	94	2557/230	1
95	2557/231	1	96	2557/232	1
97	2557/233	1	98	2557/234	1
102	2557/235	1	103	2557/236	1
104	2557/237	1	105	2557/238	1
106	2557/239	1	107	2557/240	1
108	2557/241	1	109	2557/242	1
110	2557/243	1	113	2557/244	1
114	2557/245	1	115	2557/246	1
116	2557/247	1	117	2557/248	1
118	2557/249	1	119	2557/250	1
120	2557/251	1	200	2557/252	1
201	2557/253	1	202	2557/254	1
203	2557/255	1	204	2557/256	1
207	2557/257	1	208	2557/258	1
209	2557/259	1	210	2557/260	1
211	2557/261	1	212	2557/262	1
213	2557/263	1	214	2557/264	1
215	2557/265	1	216	2557/266	1
217	2557/267	1	218	2557/268	1
219	2557/269	1	220	2557/270	1
221	2557/271	1	223	2557/272	1
224	2557/273	1	225	2557/274	1
226	2557/275	1	231	2557/276	1
232	2557/277	1	233	2557/278	1
234	2557/279	1	235	2557/280	1
236	2557/281	1	237	2557/282	1
238	2557/283	1	239	2557/284	1
240	2557/285	1	242	2557/286	1
243	2557/287	1	244	2557/288	1
245	2557/289	1	246	2557/290	1
247	2557/291	1	4952	2557/292	1
4953	2557/293	1	4954	LR 3137/309	1

P38186

<u>Lot Number</u>	<u>Part Register Number</u>	<u>Section Sheet Number</u>	<u>Lot Number</u>	<u>Part Register Number</u>	<u>Section Sheet Number</u>
63	2557/201	2	64	2557/202	2
65	2557/203	2	66	2557/204	2
67	2557/205	2	68	2557/206	2
69	2557/207	2	71	2557/208	2
72	2557/209	2	73	2557/210	2
74	2557/211	2	75	2557/212	2
76	2557/213	2	77	2557/214	2
78	2557/215	2	79	2557/216	2
80	2557/217	2	81	2557/218	2
82	2557/219	2	83	2557/220	2
84	2557/221	2	85	2557/222	2
86	2557/223	2	87	2557/224	2
88	2557/225	2	89	2557/226	2
90	2557/227	2	92	2557/228	2
93	2557/229	2	94	2557/230	2
95	2557/231	2			

P38186

<u>Lot Number</u>	<u>Part Register Number</u>	<u>Section Sheet Number</u>	<u>Lot Number</u>	<u>Part Register Number</u>	<u>Section Sheet Number</u>
63	2557/201	2	64	2557/202	2
65	2557/203	2	66	2557/204	2
67	2557/205	2	68	2557/206	2
69	2557/207	2	71	2557/208	2
72	2557/209	2	73	2557/210	2
74	2557/211	2	75	2557/212	2
76	2557/213	2	77	2557/214	2
78	2557/215	2	79	2557/216	2
80	2557/217	2	81	2557/218	2
82	2557/219	2	83	2557/220	2
84	2557/221	2	85	2557/222	2
86	2557/223	2	87	2557/224	2
88	2557/225	2	89	2557/226	2
90	2557/227	2	92	2557/228	2
93	2557/229	2	94	2557/230	2
95	2557/231	2			

P38186

<u>Lot Number</u>	<u>Part Register Number</u>	<u>Section Sheet Number</u>	<u>Lot Number</u>	<u>Part Register Number</u>	<u>Section Sheet Number</u>
96	2557/232	3	97	2557/233	3
98	2557/234	3	102	2557/235	3
103	2557/236	3	104	2557/237	3
105	2557/238	3	106	2557/239	3
107	2557/240	3	108	2557/241	3
109	2557/242	3	110	2557/243	3
200	2557/252	3	201	2557/253	3
202	2557/254	3	203	2557/255	3
204	2557/256	3	207	2557/257	3
208	2557/258	3	209	2557/259	3
210	2557/260	3	211	2557/261	3
212	2557/262	3	213	2557/263	3
214	2557/264	3	215	2557/265	3
216	2557/266	3	4952	2557/292	3
4954	LR 3137/309	3			

P38186

<u>Lot Number</u>	<u>Part Register Number</u>	<u>Section Sheet Number</u>	<u>Lot Number</u>	<u>Part Register Number</u>	<u>Section Sheet Number</u>
113	2557/244	4	114	2557/245	4
115	2557/246	4	116	2557/247	4
117	2557/248	4	118	2557/249	4
119	2557/250	4	120	2557/251	4
217	2557/267	4	218	2557/268	4
219	2557/269	4	220	2557/270	4
221	2557/271	4	223	2557/272	4
224	2557/273	4	225	2557/274	4
226	2557/275	4	231	2557/276	4
232	2557/277	4	233	2557/278	4
234	2557/279	4	235	2557/280	4
236	2557/281	4	237	2557/282	4
238	2557/283	4	239	2557/284	4
240	2557/285	4	242	2557/286	4
243	2557/287	4	244	2557/288	4
245	2557/289	4	246	2557/290	4
247	2557/291	4	4953	2557/293	4